

Welcome!

We are pleased that you have found our website and we would like to give you a brief insight into our family-run and traditional apartment house.

Our apartment house was built in 1970 and is run by the second generation. In 2019, the renovation of the rooms was completed. Thus, the rooms have been adapted to today's standards.

The house is situated in a quiet location on the western side of the alpine valley Stubaital. You can reach the centre of Fulpmes within a few minutes by foot. The valley station of the skiing resort Schlick 2000 is 250 metres away from our guest house. The bus stop for the skiing and hiking area is located in the immediate vicinity. The bus stop for the skiing and hiking area is located in the immediate vicinity.



If you want to relax after an exhausting day of hiking, please feel free to make yourself comfortable on our beautiful lawn with a view to the Stubaital mountains.

By car, you can reach Innsbruck, the capital city of Tyrol, within 25 minutes and the Stubai glacier (Stubai Gletscher) within 30 minutes from our apartment house. However, you could also enjoy a ride with the Stubaitalbahn, a tramway which takes you to Innsbruck across the magnificent meadows of Telfes (Telfer Wiesen). The train station of the Stubaitalbahn can be reached within 10 minutes from our apartment house.



Each of our 6 apartments features free WLAN, satellite TV with a 32" flat screen, shower and WC.

In the basement of our apartment house you can find our on-site ski storage including a drying room which can also be used as storage room for bicycles and paragliders in summer. There are enough parking spaces available.

We would be pleased to welcome you as a guest in our apartment house.

If you have any questions regarding our services, the surrounding area or anything else, please don't hesitate to contact us.

Beate and Hermann Morandell

Apartments Morandell

Tschaffinis-Umgebung 20 / A-6166 Fulpmes

Mobil: +43(0)676 950 37 50 Beate Morandell

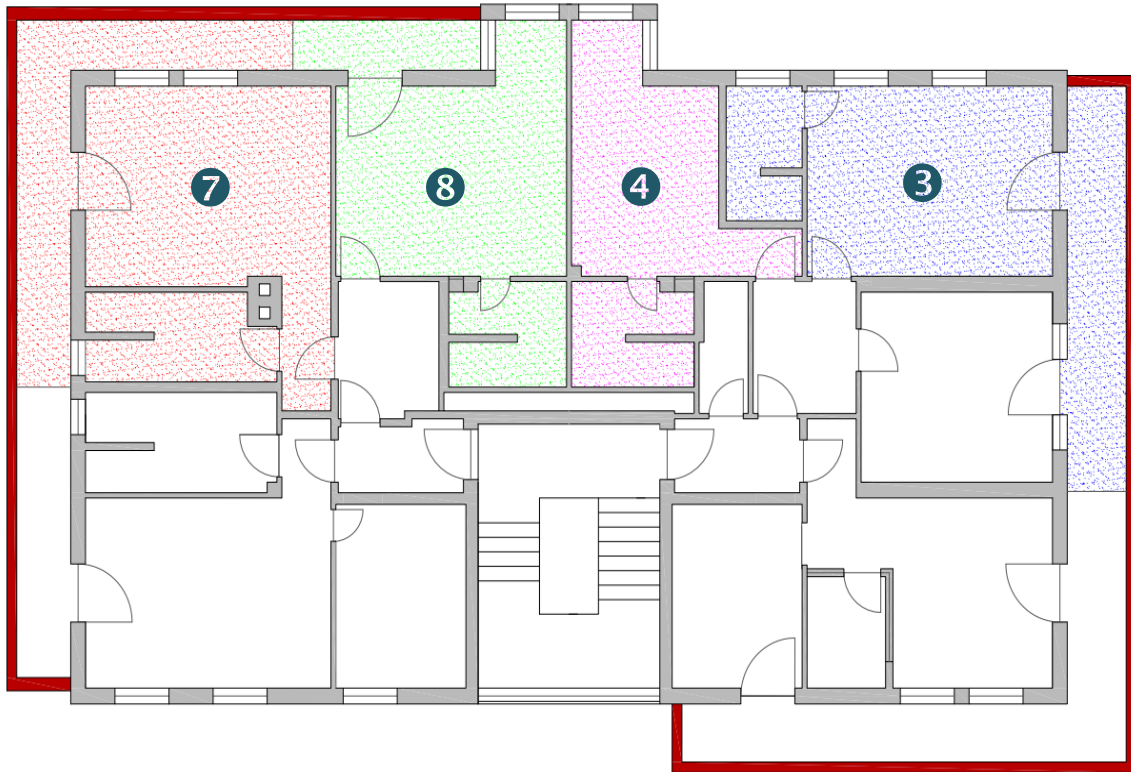
Mobil: +43(0)664 13 80 740 Hermann Morandell

mail: office@apt-orandell.at

www.apt-morandell.at

Room overview

First floor



| room | accommodation | room size |
|------|---------------|--|
| 3 | 2-3 | 23 m ² /248 ft ² |
| 4 | 2 | 18 m ² /194 ft ² |
| 7 | 2-3 | 26 m ² /280 ft ² |
| 8 | 2 | 22 m ² /237 ft ² |

Room 3

size 23 m² (248 ft²)

suitable for 2 to 3 guests

first floor / balcony

south/east view

Room

double bed 180x200cm (79x79 in)

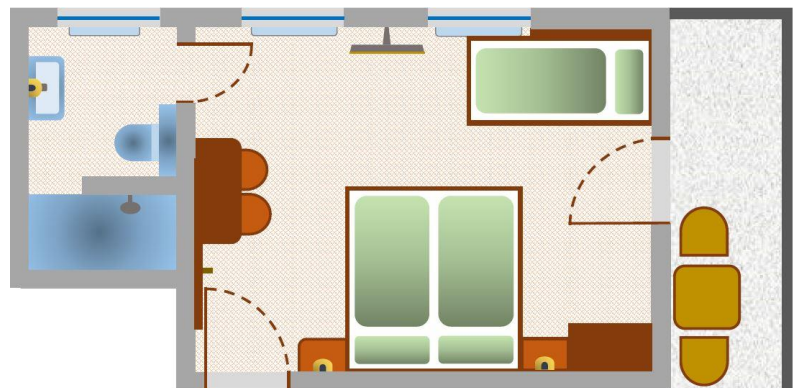
additional bed 80x190cm (31x75 in)

WLAN

satellite TV with a 32" flat screen

table

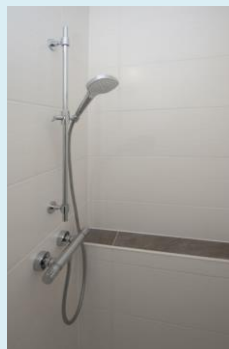
coffee machine (Nespresso capsule / filter)



Bathroom

shower 140 x 80 cm (55 x 31 in)

WC



Room 4

size 18 m² (194 ft²)

2 guests

first floor

south/east view

Room

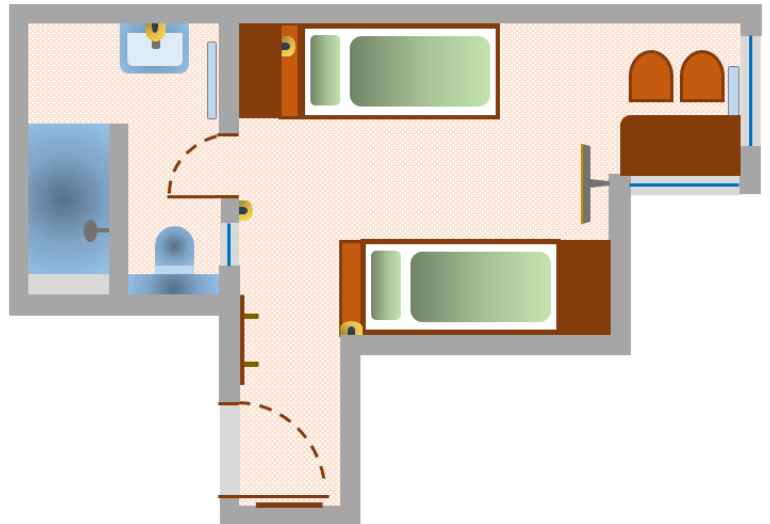
single beds 90x200cm / 35x79in (2x)

WLAN

satellite TV with a 32" flat screen

table

coffee machine (Nespresso capsule / filter)



Bathroom

shower 140 x 80 cm (55 x 31 in)

bath radiator

WC



Room 7

size 26 m² (280 ft²)

first floor / balcony

2 to 3 guests

north/west view

Room

double bed 180x200cm (71x79in)

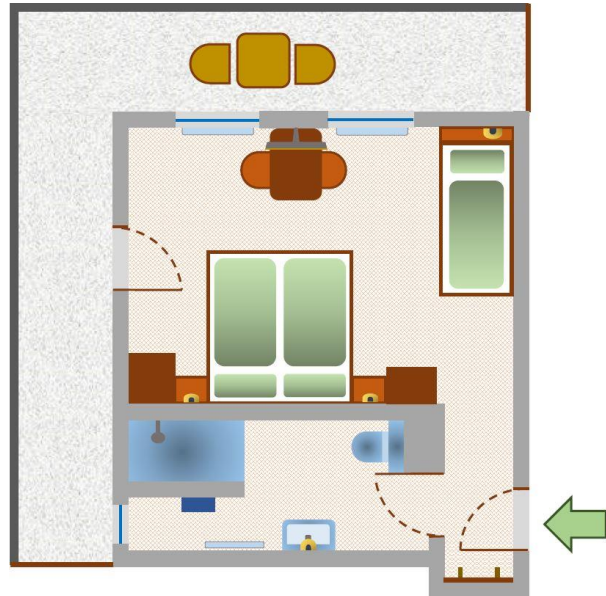
additional bed 90x200cm (35x79in)

WLAN

satellite TV with a 32" flat screen

table

coffee machine (Nespresso capsule / filter)



Bathroom

shower 140 x 80 cm (55 x 31 in)

bath radiator

WC



Room 8

size 22 m² (237 ft²)

first floor / balcony

2 guests

west view

Room

double bed 180 x 200 cm (71 x 79 in)

WLAN

satellite TV with a 40" flat screen

desk

dining table for 4 people

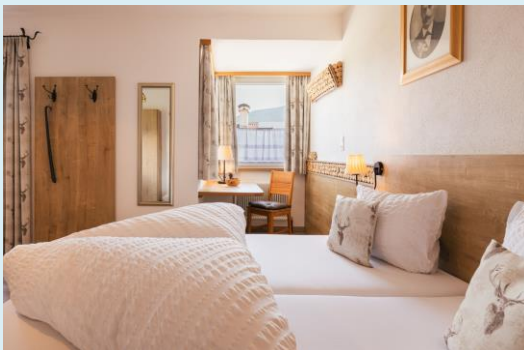
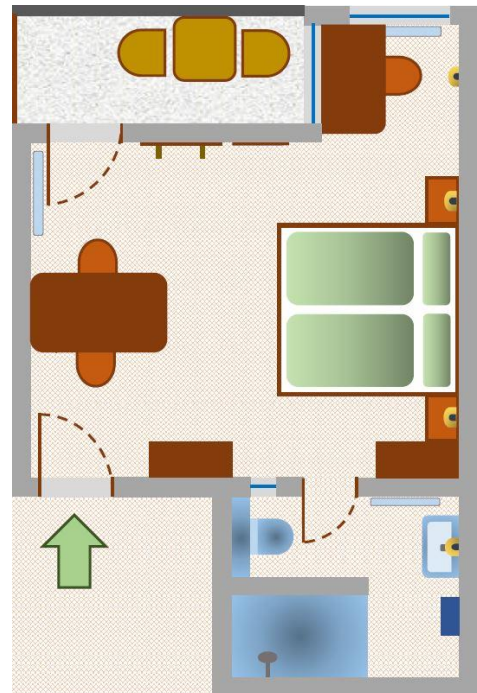
coffee machine (Nespresso capsule / filter)

Bathroom

shower 140 x 80 cm (55 x 31 in)

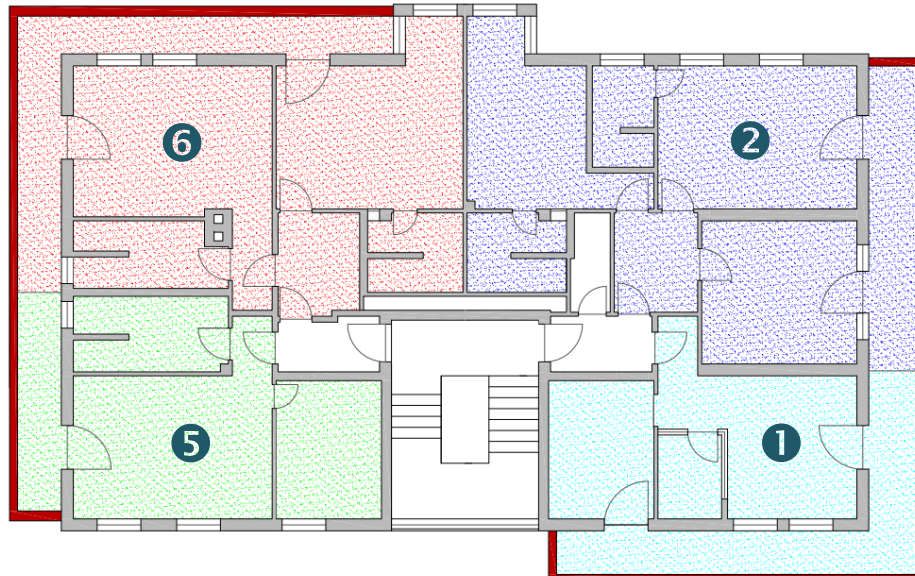
bath radiator

WC

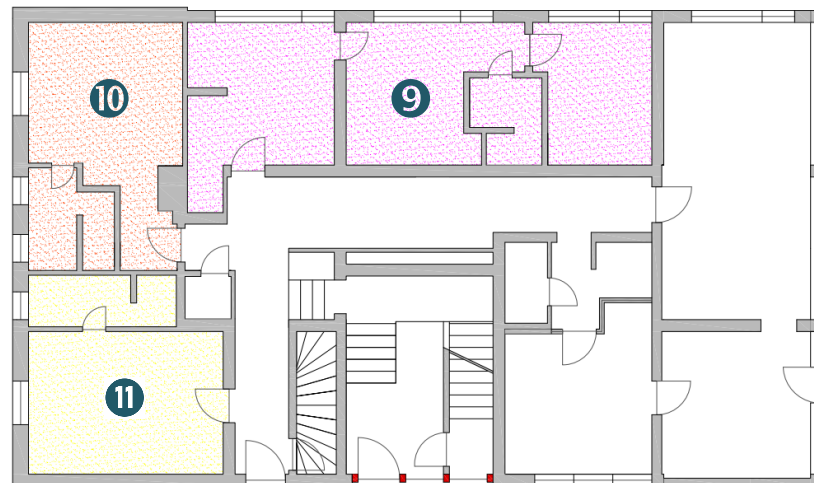


Apartment overview

first floor



ground floor



| Typ | | accommodation | room size |
|-----------|----|---------------|---|
| Apartment | 1 | 2-3 | 30 m ² /323 ft ² |
| Apartment | 2 | 4-5 | 62 m ² /667 ft ² |
| Apartment | 5 | 2-3 | 37 m ² /398 ft ² |
| Apartment | 6 | 4-5 | 52 m ² /560 ft ² |
| Apartment | 9 | 4 (6) | 41 m ² /441 ft ² (61 m ² /657 ft ²) |
| Studio | 10 | 2 | 20 m ² /215 ft ² |
| Studio | 11 | 2 | 18 m ² /194 ft ² |

Apartment 1

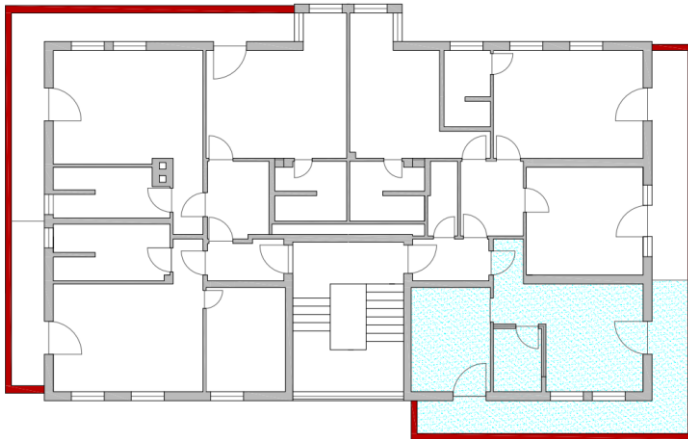
accommodation of 2 to 3 guests

size 30 m² (323 ft²)

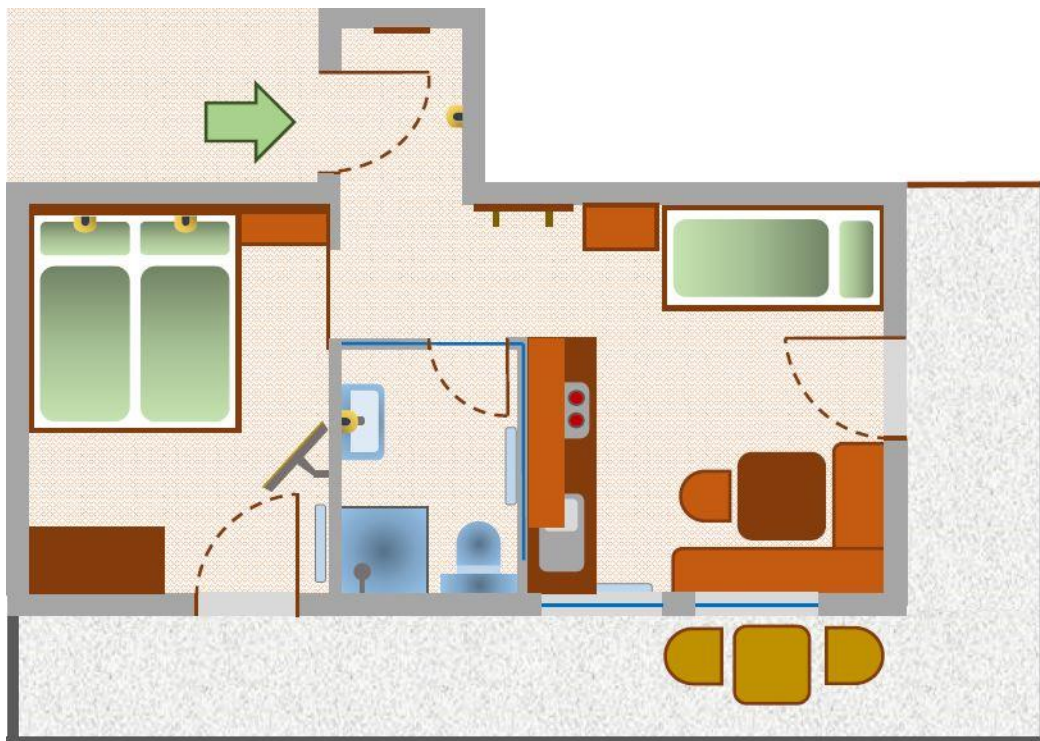
first floor / balcony

south/west view

Apartment overview



Detailed plan





Bedroom

double bed 180 x 200 cm (71 x 79 in)
Additional bed 90 x 200cm (35 x 79in)
WLAN
Flat-Screen 32" SAT-TV

Bathroom

shower 76x76cm (30x30in)
bath radiator
WC

Combined kitchen and living room

glass ceramic stove
oven
dishwasher
microwave
fridge
coffee machine (Nespresso capsule / filter)
extractor hood
seating corner for 3 to 4 guests
dishes and cookware

Apartment 2

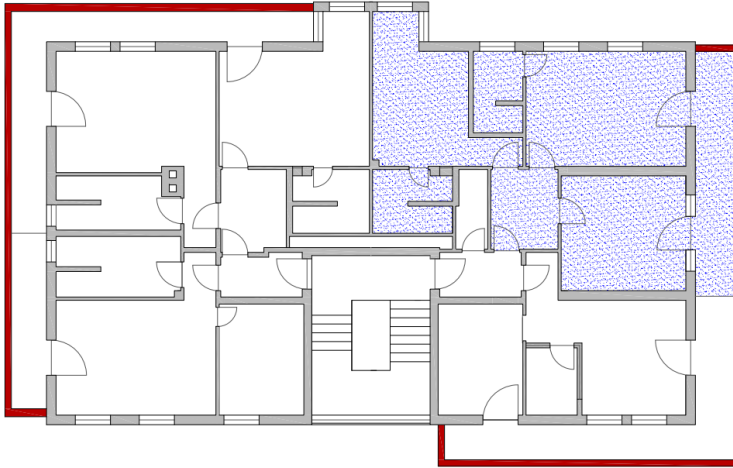
accommodation of 4 to 5 guests

size 62 m² (667 ft²)

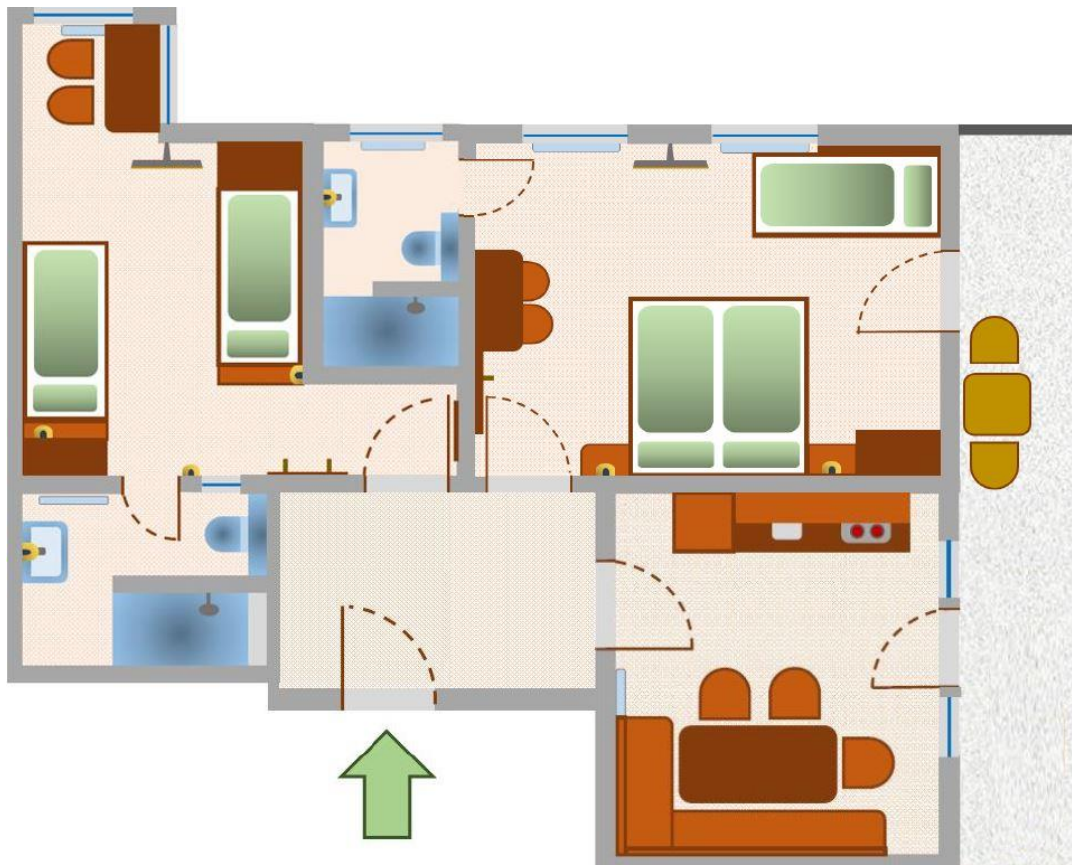
first floor / balcony

south/east view

Apartment overview



Detailed plan

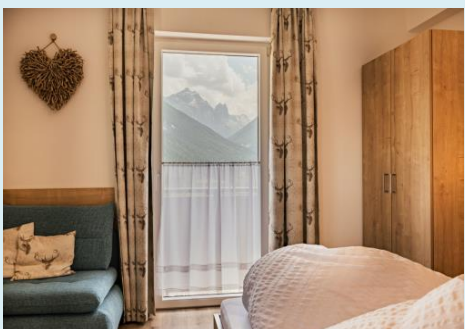
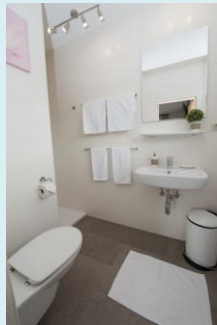


Combined kitchen and living room



glass ceramic stove, oven
 dishwasher
 microwave
 fridge
 coffee machine (Nespresso capsule / filter)
 extractor hood
 seating corner for 8 guests
 dishes and cookware

Bedroom 1



double bed 180x200 cm (71x79 in)
 additional bed 90x200 cm (35x79 in)
 table
 satellite TV with a 32" flat screen
 WLAN
Bathroom
 shower 140x80 cm (55x31 in)
 WC

Bedroom 2



single beds 90x200cm / 35x79in (2x)
table
satellite TV with a 32" flat screen
WLAN

Bathroom

shower 140x80 cm (55x31 in)
bath radiator
WC

Apartment 5

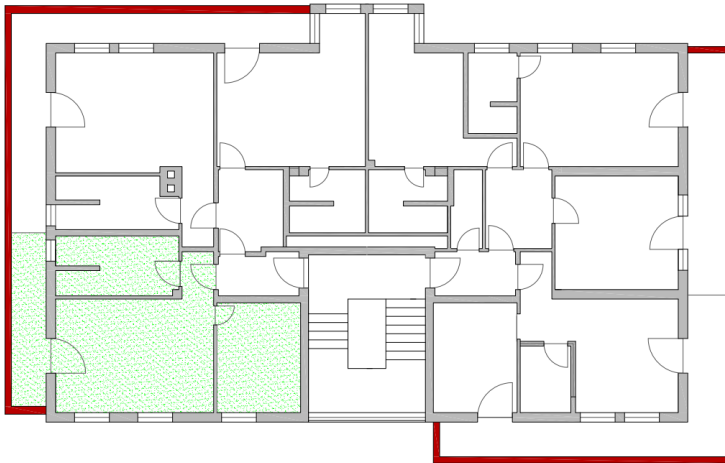
accommodation of 2 to 3 guests

size 37 m² (398 ft²)

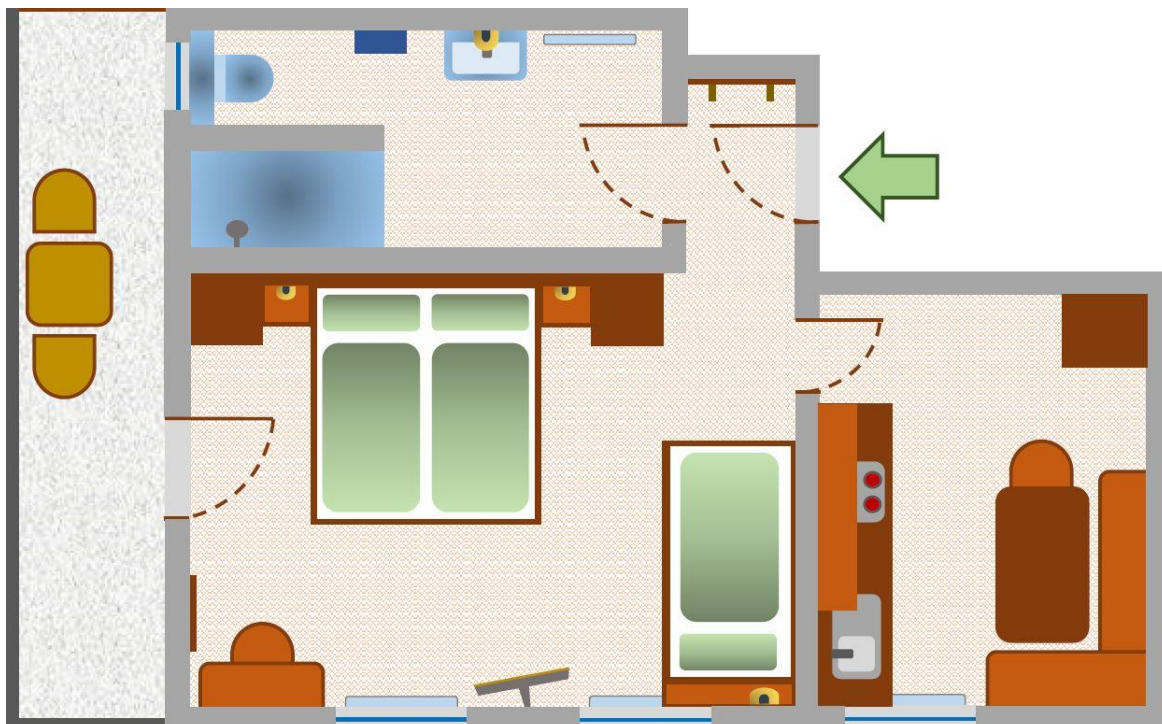
first floor / balcony

north/west view

Apartment overview



Detailed plan



Combined kitchen and living room



- glass ceramic stove / oven
- dishwasher
- microwave
- fridge
- coffee machine (Nespresso capsule / filter)
- extractor hood dishes and cookware
- seating corner for 4 guests
- dishes and cookware

Bedroom



- double bed 180x200 cm (71x79 in)
- additional bed 90x200 cm (35x79 in)
- table
- satellite TV with a 32" flat screen
- WLAN

Bathroom

- shower 140x80cm (55x31in)
- bath radiator / WC

Apartment 6

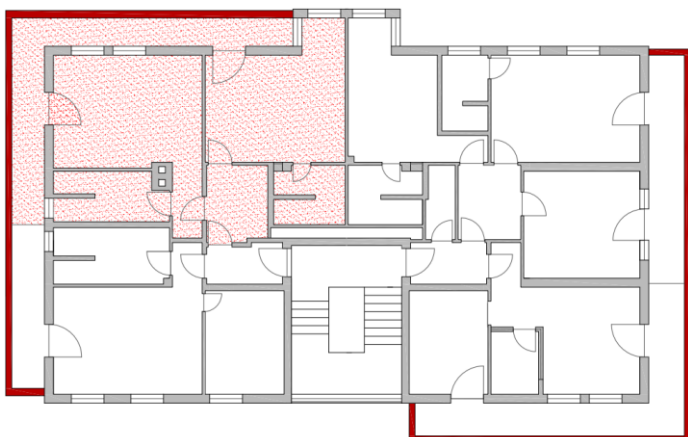
accommodation of 4 to 5 guests

size 52 m² (560 ft²)

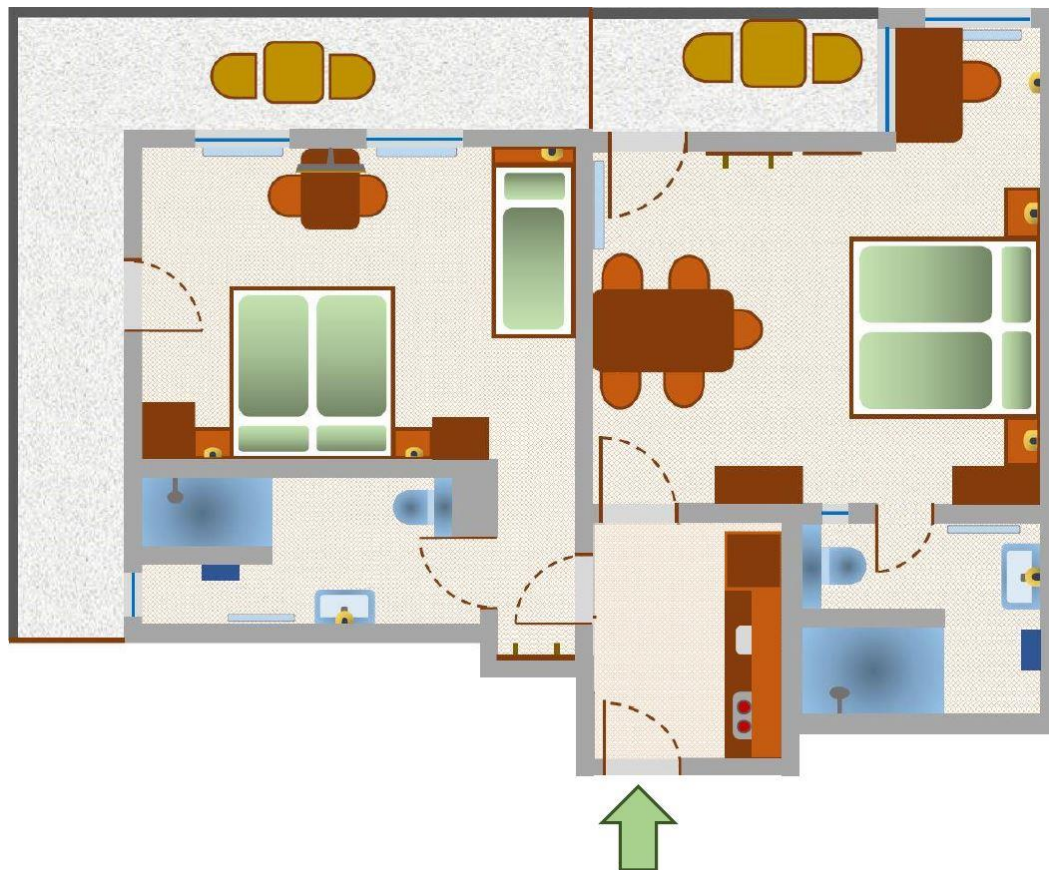
first floor / balcony

north/east view

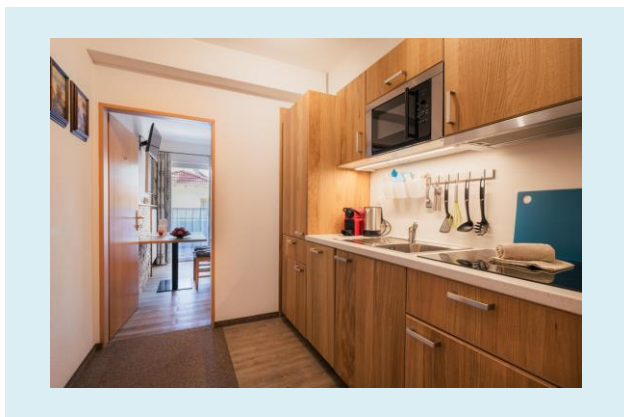
Apartment overview



Detailed plan



Kitchen



glass ceramic stove
 dishwasher
 microwave
 fridge
 coffee machine (Nespresso capsule / filter)
 extractor hood
 dishes and cookware

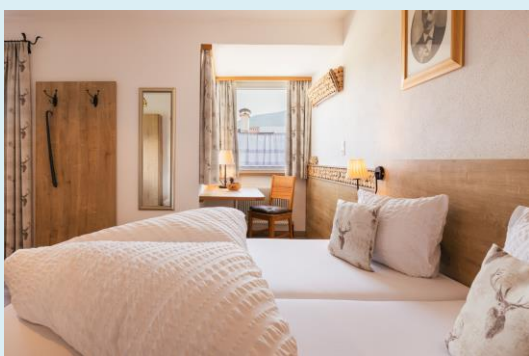
Bedroom 1



double bed 180x200cm (71x79in)
 additional bed 90x200cm (35x79in)
 table
 satellite TV with a 32" flat screen
 WLAN

bathroom
 shower 140x80cm (55x31in)
 bath radiator
 WC

Bedroom 2



double bed 180 x 200 cm (71 x 79 in)
desk
dining table for 4 people
satellite TV with a 40" flat screen
WLAN

Bathroom

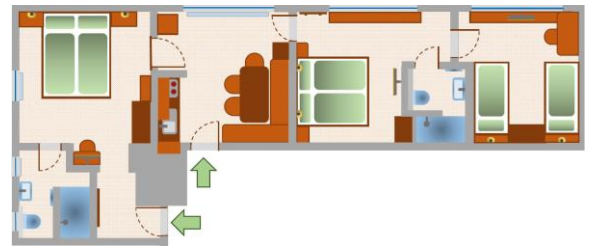
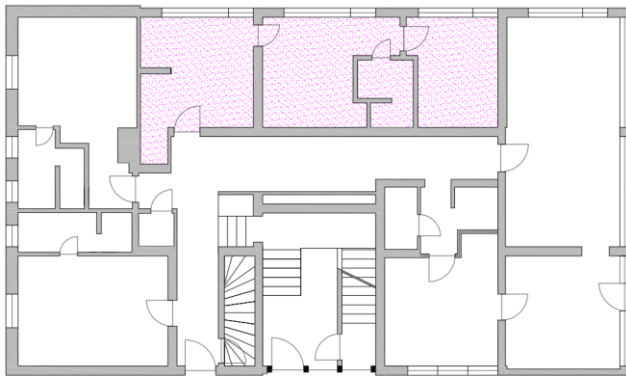
shower 140 x 80 cm (55 x 31 in)
bath radiator
WC

Apartment 9

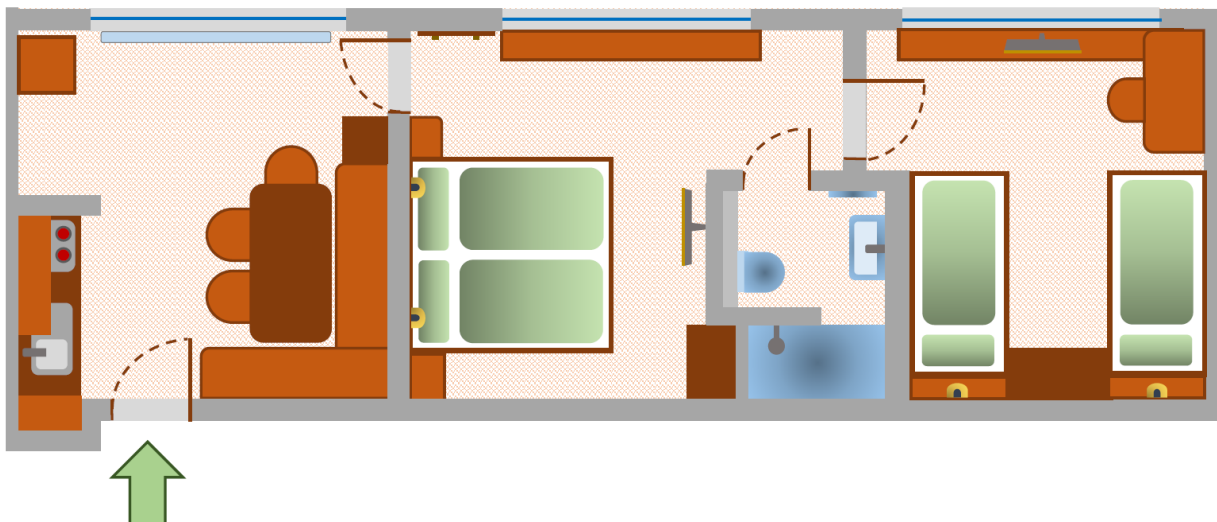
accommodation of 4 guests
size 41m² (441ft²)
ground floor
west view
2 bedrooms
1 bathroom

accommodation of 6 guests
size 62m² (657ft²)
ground floor
north/west view
3 bedrooms
2 bathroom

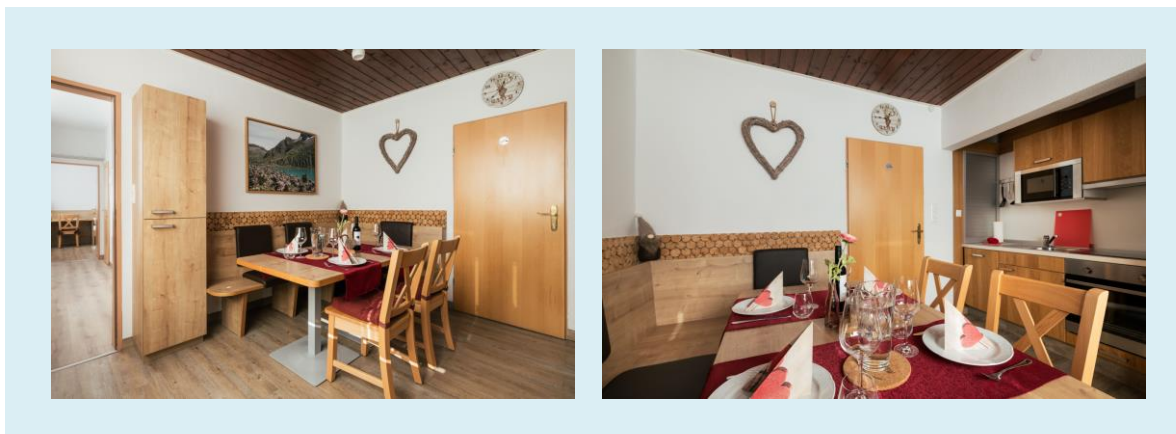
accommodations overview for 4 guests



Detailed plan



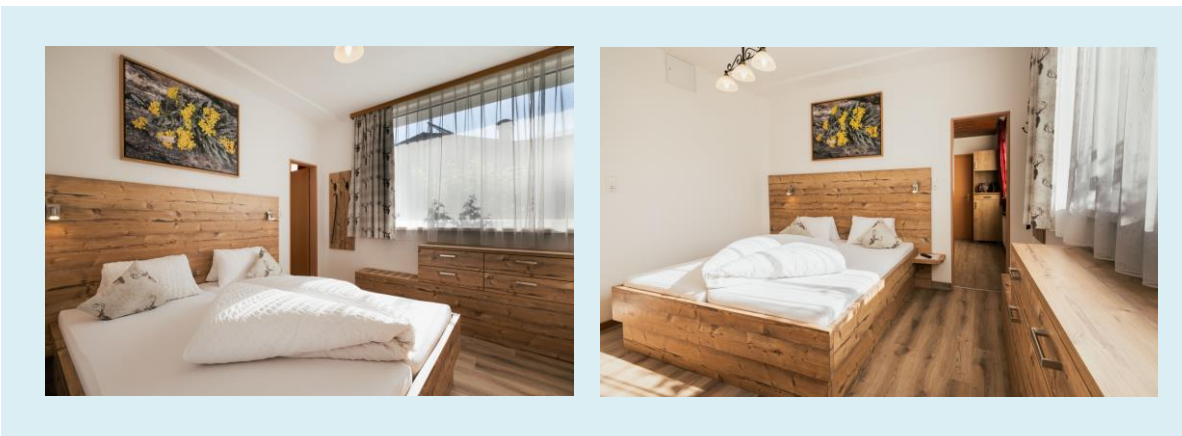
Combined kitchen and living room



glass ceramic stove
oven
dishwasher
microwave
fridge

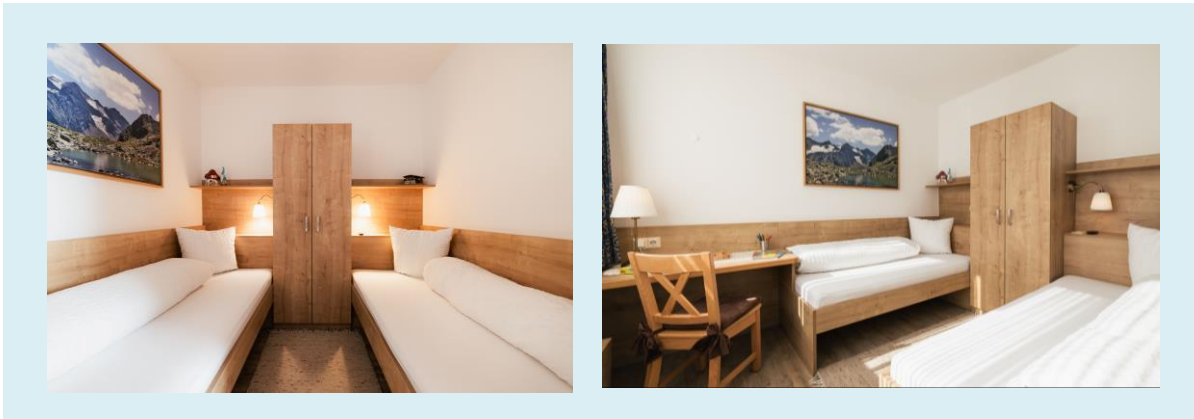
coffee machine (Nespresso capsule / filter)
extractor hood
dishes and cookware
seating corner for 6 guests

Bedroom 1



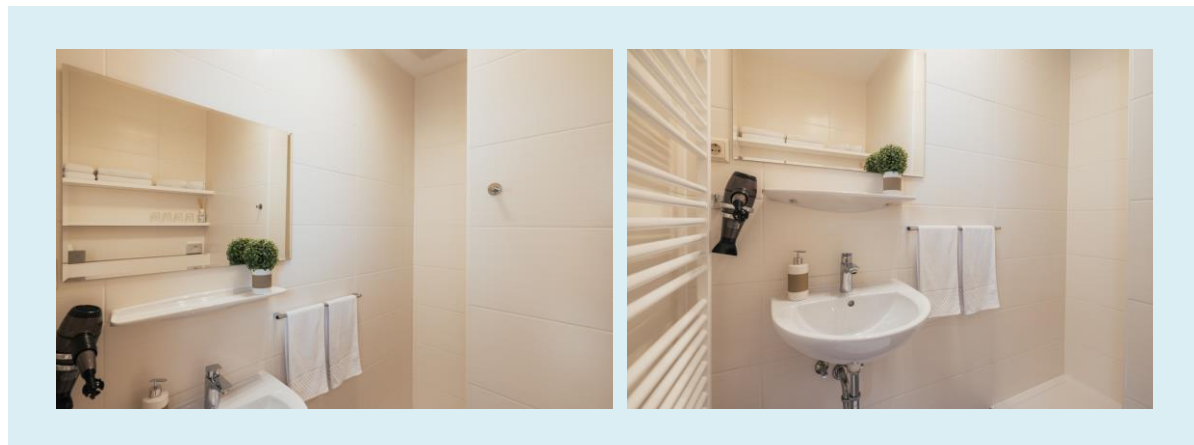
double bed 180 x 200 cm (71 x 79 in)
satellite TV with a 32" flat screen
WLAN

Bedroom 2



two single beds 90 x 200 cm (35 x 79 in)
desk
satellite TV with a 42" flat screen
WLAN

Bathroom



shower 140 x 75 cm (55 x 30 in)
bath radiator
WC

Apartment 10

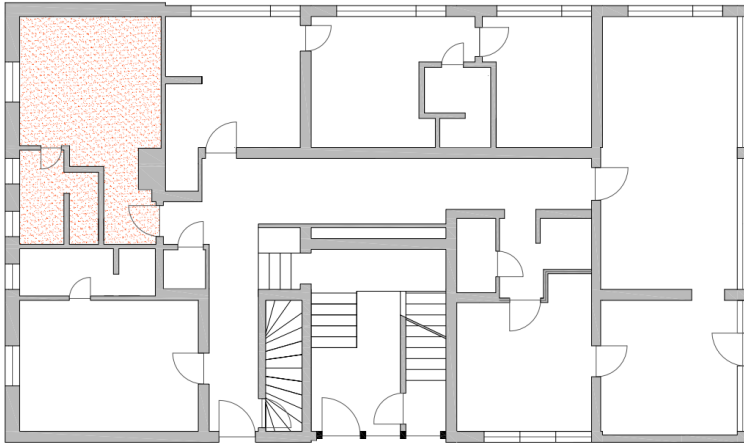
size 20 m² (215 ft²)

2 guests

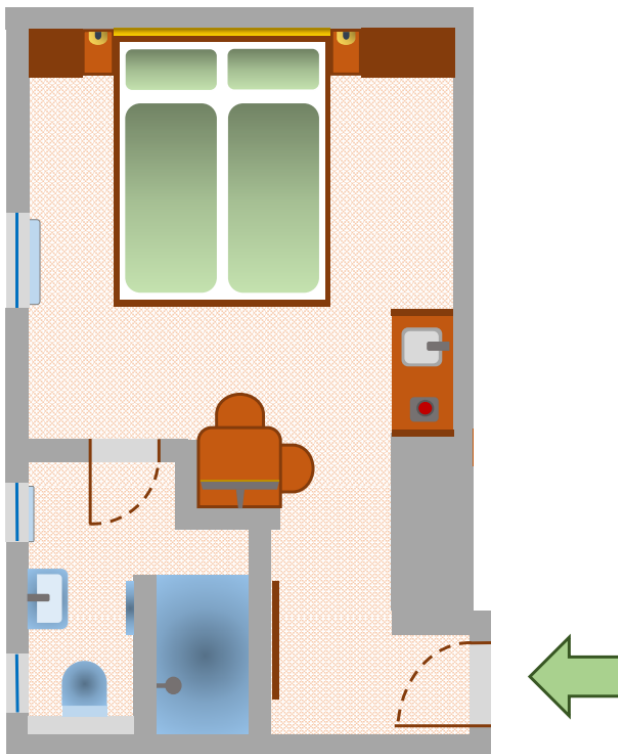
ground floor

north view

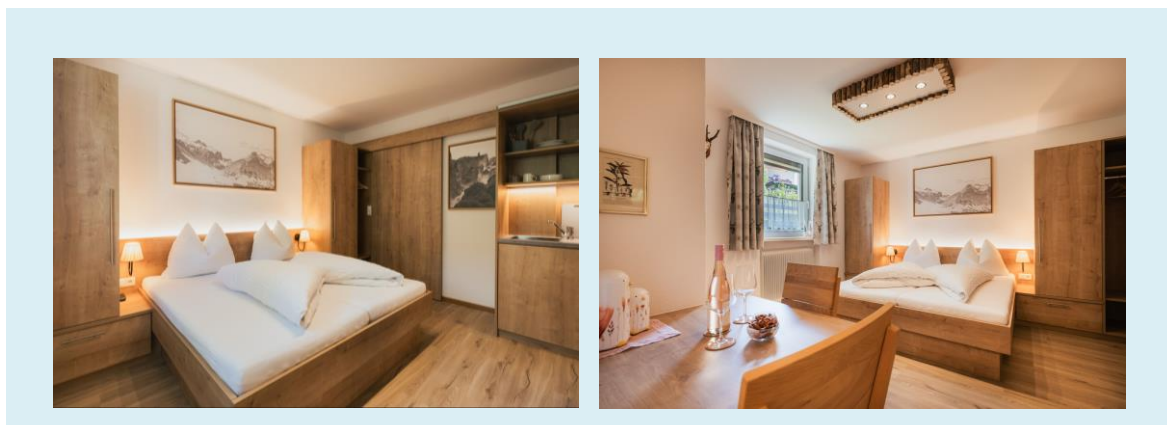
Apartment overview



Detailed plan



Room



Room

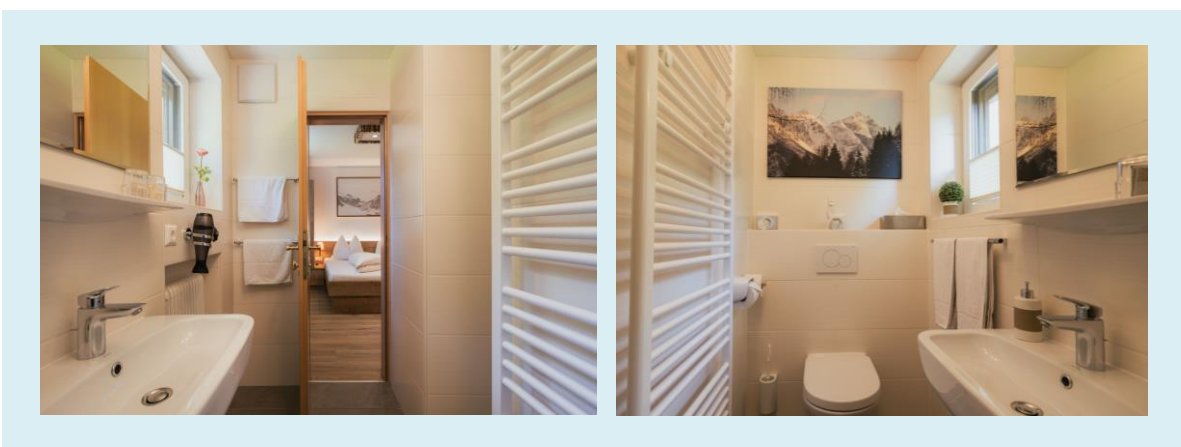
double bed 180 x 200 cm (71 x 79 in)
 WLAN
 satellite TV with a 32" flat screen

Kitchen block

hotplate 2-fold
 microwave
 fridge

eating and cooking utensils
 coffee machine (Nespresso capsule / filter)
 table for 2 guests

Bathroom

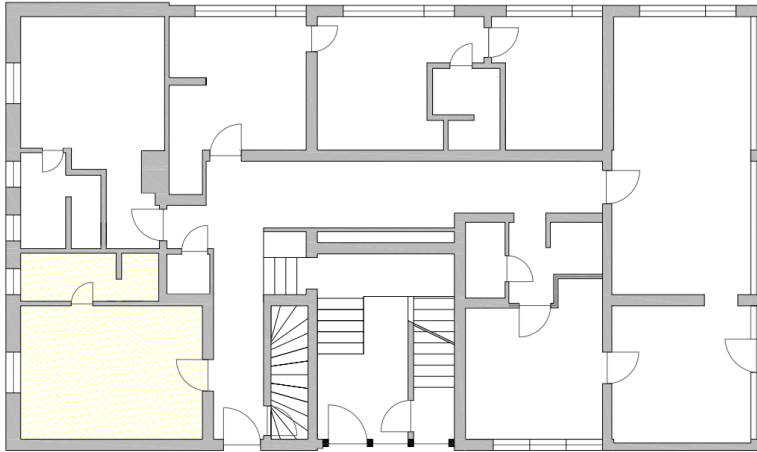


shower 140 x 80 cm (55 x 31 in)
 bath radiator
 WC

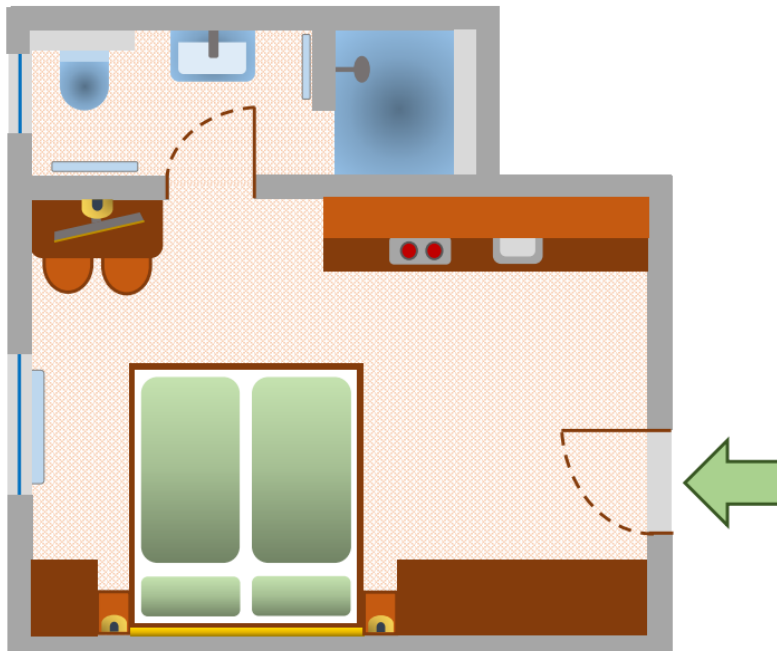
Apartment 11

accommodation of 2 guests
size 18 m² (194 ft²)
ground floor
north view

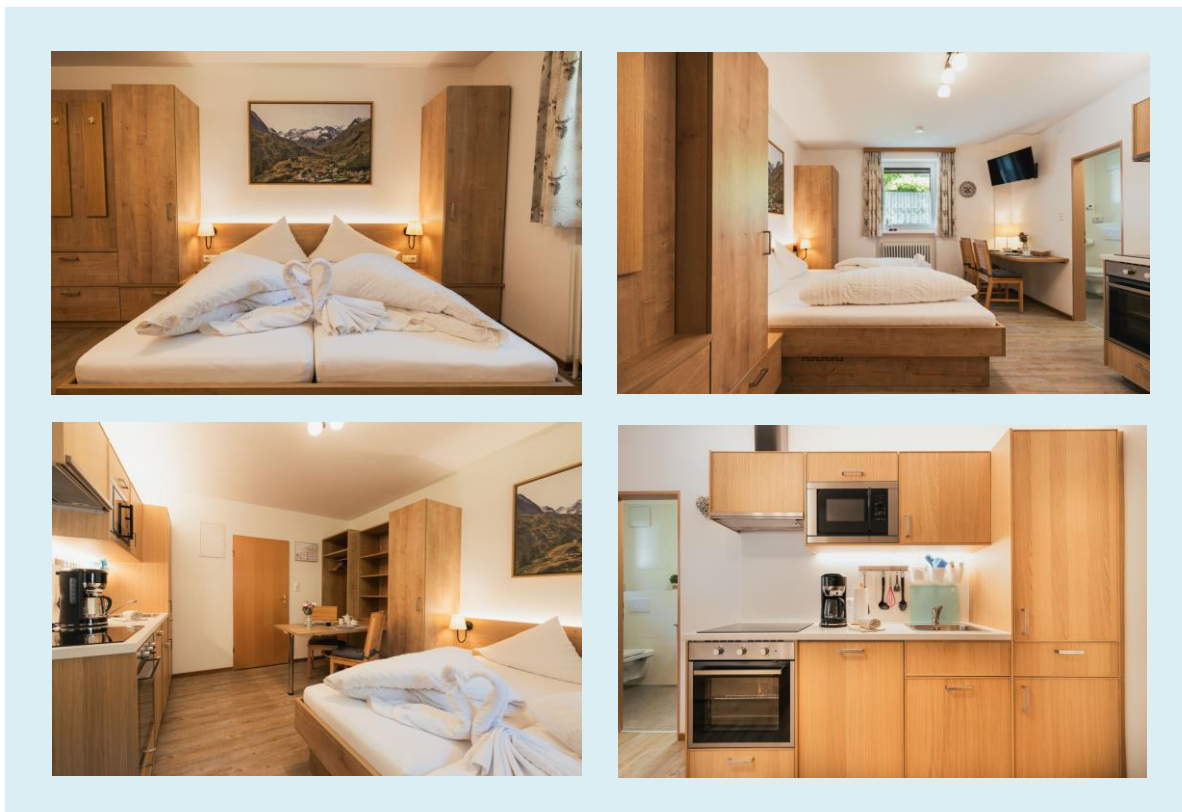
Room overview



Detailed plan



Bedroom



Room

double bed 130x100 cm (51 x 39 in)

WLAN

satellite TV with a 32" flat screen

Kitchen block

glass ceramic stove

oven

dishwasher

microwave

fridge

Kaffeemaschine

(Nespresso-Kapsel / Filter)

extractor hood

dishes and cookware

table for 2 guests

Bathroom



shower 130 x 100 cm (51 x 39 in) / bath radiator / WC r

View

south view



east view



north view



west view



Additional services

- E-charging station
- Bread roll service
- Use of washing machine
- Use of tumble dryer
- Flat iron
- High chair for children
- Garden with sunbathing lawn
- Deck chair
- Garden furniture
- Barbecue area
- Drying room
- Ski room
- Bicycle and motorcycle storage room
- Lounge "Tiroler Stube"

Drying room

- washing machine
- laundry dryer
- dryer for ski boots and gloves
- storage place for ski helmets



Lounge „Tiroler Stube“



Breakfast room

20 seats



Garden



Barbecue area



Car parking



E-charging station



Bike and ski service area



Bicycle and motorbike parking



Coffee machine selection



Bread roll service / daily order



- Kaisersemmel
- Alpine roll
- Croissant
- Kornspitz poppy seeds, sesame seeds, salt

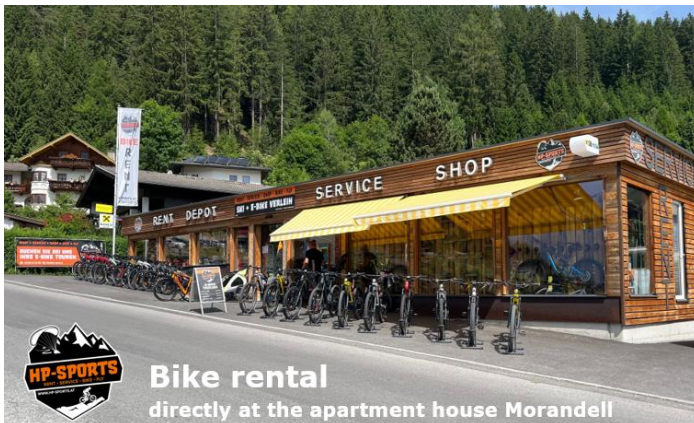
Breakfast is available



Infowall



Partner **Ski and bike rental / tandem flights**



Together with our partner "fly-stubai" and "HP-Sports", we offer professional ski and bike rental as well as tandem flights right next to our apartment house.

+43 664 47 65 650
 +43 664 44 42 694
 office@hp-sports.at

13%
 discount

